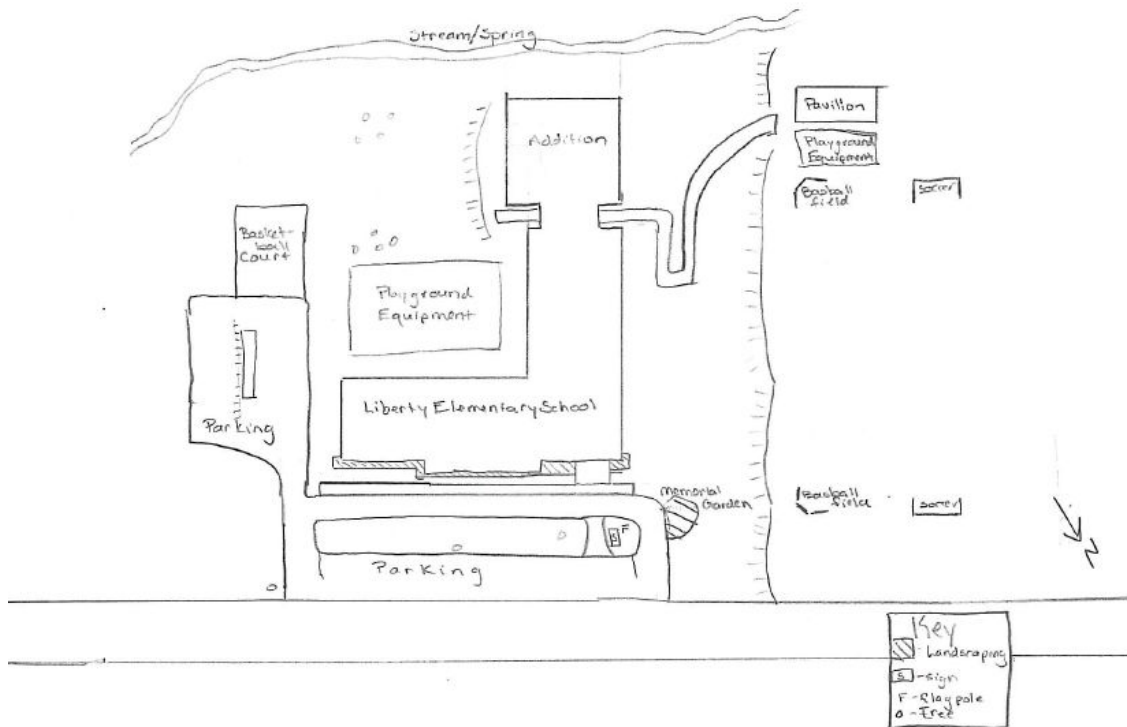


150014 – Liberty Elementary School



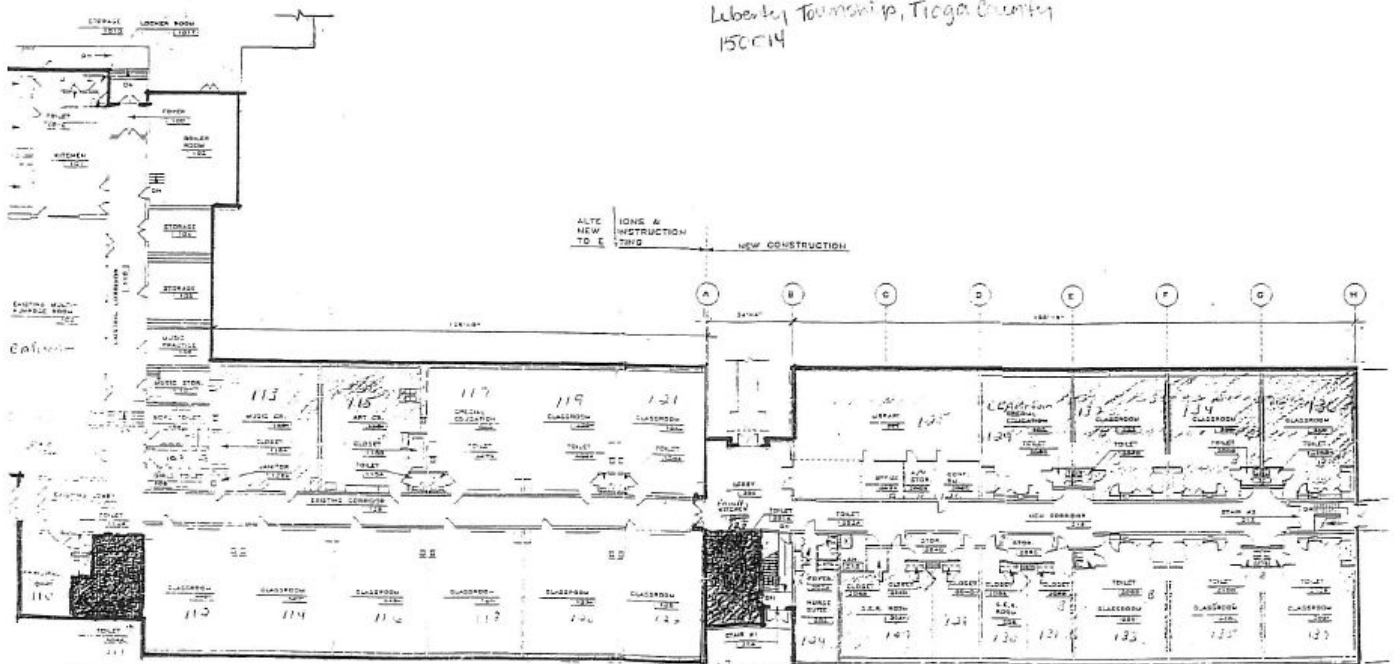
Liberty Elementary School
 Liberty Township, Tioga County
 150014



Site Plan of Liberty Elementary School

SOUTHERN TIOPA SCHOOL DISTRICT
 LIBERTY ELEMENTARY SCHOOL
 R.R. BOX 30
 LIBERTY, PA 16220-9703
 PHONE (570)324-2521

Liberty Township, Tioga County
 150014



Floor Plan of Liberty Elementary

150014; Liberty Elementary School. This school is located at 8622 Route 414, Liberty, Pennsylvania in Liberty Township, Tioga County. It is part of the Southern Tioga School District. The 1961 building is located on a narrow, rectangular lot with rolling hills. The building is set back from the roadway behind a narrow parking area, a narrow strip of lawn with a school sign, flagpole, and scattered trees, and a circular driveway. A memorial garden is located at the northwest end of the driveway. Sports fields (baseball and soccer), playground equipment, and a pavilion are located on a hill west of the school building. A narrow lawn at the rear of the school is bounded by a creek. A second playground, set in a rubber chip lot, is located south of the school, within the L formed by two wings of the building. Areas of lawn, an asphalt play area (basketball court), and paved parking lots are also located south and southeast of the school.

The 1961 core of the school forms an L with an L-plan interior hallway. The short leg, parallel to the roadway, contains the main entrance, offices, kitchen, and multi-purpose room. The longer leg contains classrooms. A 1991 addition extends the longer leg with a library and additional classrooms. The one-story building is a concrete-block structure clad in brick. It sits on a concrete-block foundation. Asphalt shingles cover the low-pitched hipped roofs of the core and the gable roof of the addition. There is no visible chimney. The main entrance contains aluminum-frame glass doors with transoms. These are sheltered by a metal flat-roof portico. The core is lit by picture and hopper windows. The 1991 addition is also one story, set on a partially exposed basement. A decorative pedimented brick entrance with metal-frame glass doors is located on the southwest side of the addition, providing closer access to the side parking areas.

The main entrance contains a vestibule with brick walls enclosed by a second set of aluminum-frame glass doors. The main lobby features glazed and painted concrete-block walls, terrazzo floor tiles, acoustic ceiling tiles and fluorescent lights. The multi-purpose room features tile floors, painted concrete-block walls, dropped ceiling with acoustic tiles, fluorescent lights, and a stage accessed via wide stairs. Movable folding tables and chairs are also located in the room. The library, located in the addition, has a carpeted floor. Specialized classrooms include, or have included, Special Education, kindergarten, a music room, and an art room. Multiple classrooms in the core and the addition have individual bathrooms.

Liberty Elementary School was constructed in 1961 by the Liberty Joint School Authority for children in four local municipalities. The school opened with eleven classrooms, a multi-purpose room, music room, kitchen, offices, nurses suite, and utility rooms. In the late 1960s the Liberty Joint School Authority merged with the North Penn School District and Mansfield School District, forming the Southern Tioga School District. An addition containing a library and multiple classrooms was appended to the school in 1991. This provided the school with the ability to accommodate children from the Cogan House School, which was being closed.

Historical information provided by Liberty Elementary School.

United States Department of Agriculture

1969 Aerial Photograph AQD-5KK-267. Created on October 10, 1969. On

file at the Pennsylvania Geological Survey Library, Middletown,
Pennsylvania.

United States Geological Survey

1986 *Liberty, PA Quadrangle*. 7.5 minute series. Topography by photogrammetric methods from aerial photographs taken 1969. Field checked 1969. Photorevised 1986. Reston, VA.

1994 *Liberty SW, PA Aerial Photograph*. USGS Reference Number 41077-E1-04-PHT. Created on April 18, 1994.



Aerial View of Liberty Elementary School

More Photos of Liberty Elementary

